

Past Murals Projects Portfolio

Cat Forsythe

Introduction

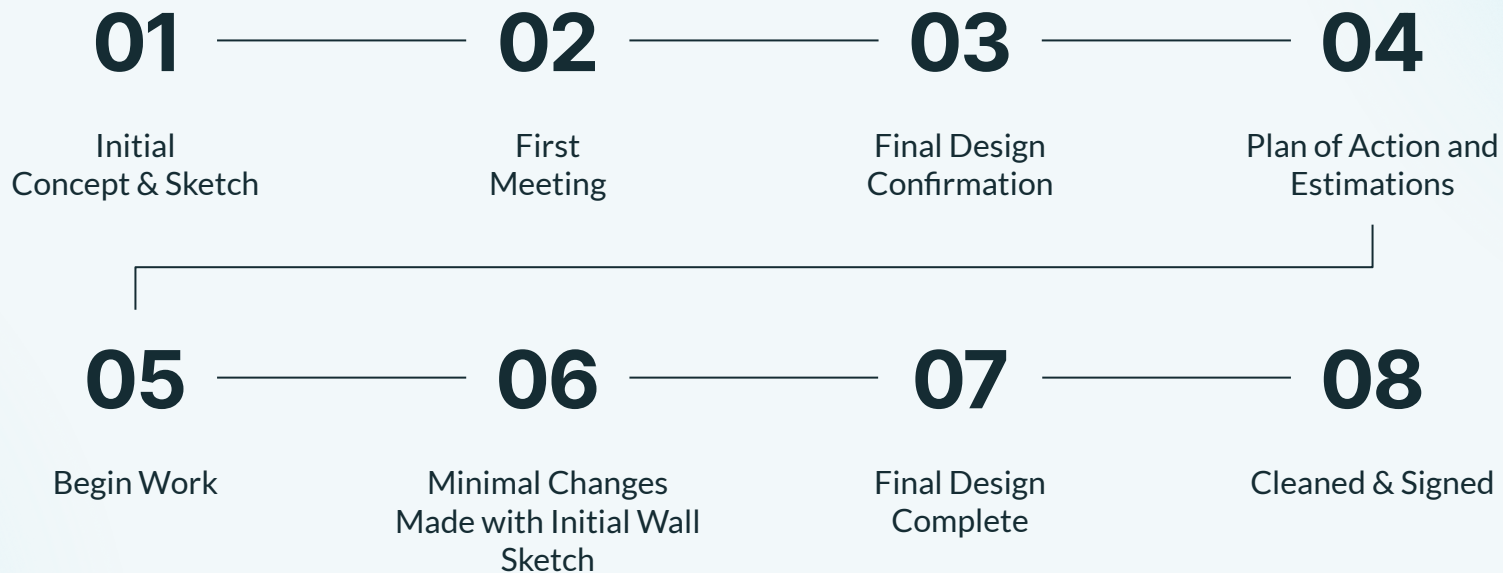
Hello, this document goes in detail about previous murals I've done in Arkansas and the process that was done start to finish. These were done in Conway's Little Creek Behavioral Hospital and Hot Springs' Ouachita Children, Youth, & Family Services. The murals were done in 2020-2022 as commissions done for a private client who was working at the time of the jobs.

I typically do indoor, but I am open to doing outdoor murals as well. I usually use house latex paint that will be invoiced at the end with the decided price. If the distance is far from Central Arkansas, travel expenses will be included as well.

Cat Forsythe

auvue@tutanota.com

The Mural Process



Little Creek 2020-2021

Behavioral Hospital

Mural Projects

Keith Haring Wall

A project that involved the classes of kids at the time, taking their designs and transforming them into Keith Haring characters.

Fish Entryways

Designed after the new unit names, the two entry ways were designed based on the type of fish and their scenery (ocean or creek).

Logo Mural

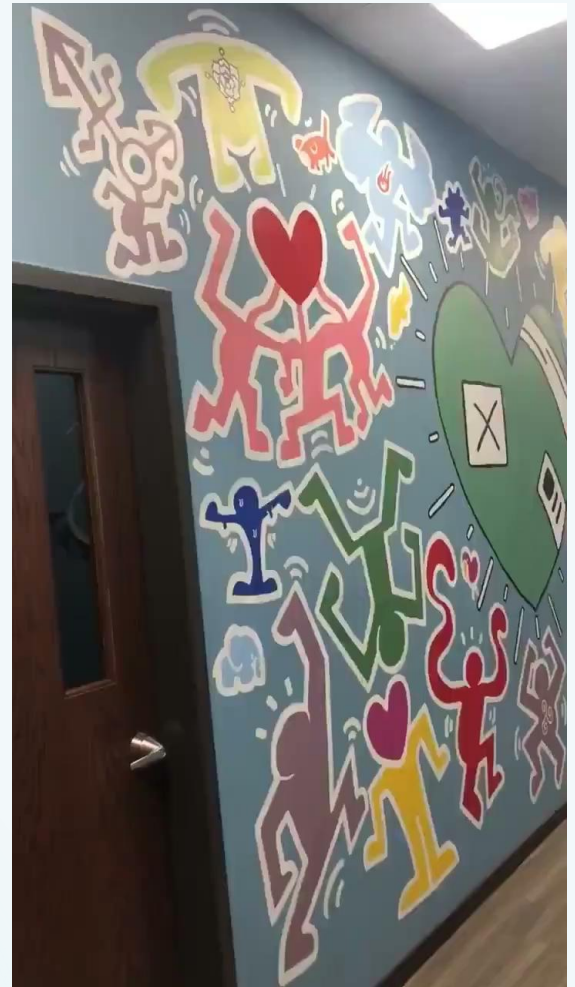
Alongside the Keith Haring wall, the concept was to create a logo for the building and enlarge it to take up the entire wall.

Bubble Unit Door Labels

Each unit of kids were given fish-type names and all of their units were labeled with bubble-type lettering to follow the new underwater theme.

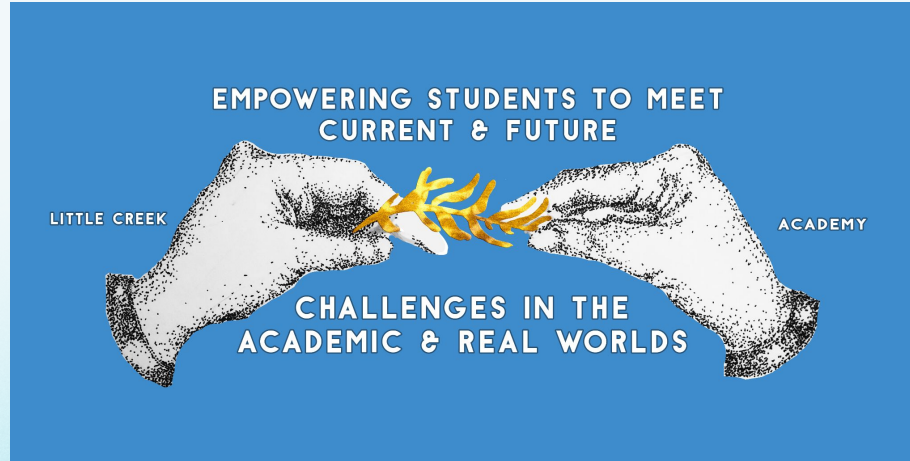
Keith Haring Mural

Concept: The two classroom classes were asked to create a design on an index card with the prompt “Design something that represents YOU”. After receiving the index cards, I was to transform them into a Keith Haring character. Once all done, they were given a placement around a bandaged heart.



Logo Mural

The initial idea was to create a logo for the Little Creek entity based on the existing logo design and transform it for an enlarged version. It was to keep a simple palette like the company's colors, but an accent color was to be added.



Fish Entryways

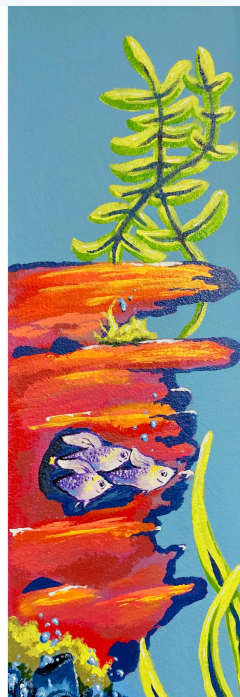
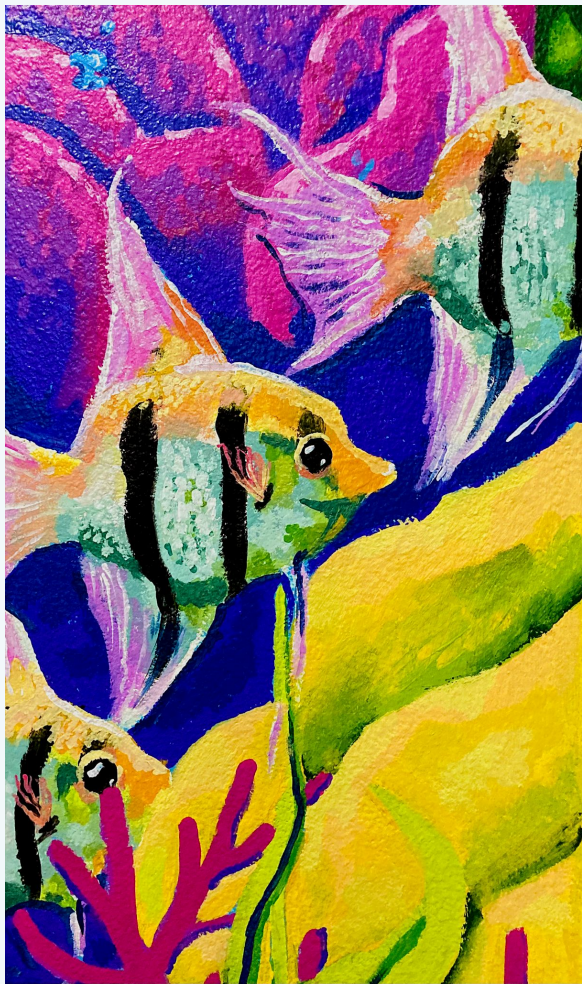
The prompt was to create a design for the two unit doors to represent each side. At the time, it was a major issue for staff and kids to tell the difference between each entryway since they looked the exact same. Every unit (grade and gender) was given a local Arkansan fish to go along with the “Little Creek” theming. After sketching, it was realized one side had more “lake” fish and the other had more “ocean” fish, so the two designs became those landscapes. One or two fish of the units were to be painted inside the entryway in order for the children to feel some familiarity with their side and distinguish which unit was theirs.



Initial Sketch & Final Mural
Lake Side



**Initial Sketch & Final Mural
Ocean Side**



Details

Bubble Unit Door Labels

Done alongside the unit entryways, each unit was to be given a label above their respective door. The building's layout did not have much distinguishing features, so this project was mostly to give each door an identity so it was easier to navigate through the day. To keep up with the underwater aesthetic, the labels were painted like they were underwater bubbles.

